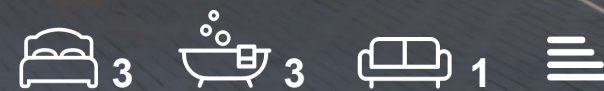




7 Cranworth Mews La Vallee Des Vaux  
, St Helier, JE2 6FS

**£835,000**





## 7 Cranworth Mews La Vallee

, St Helier, JE2 6FS

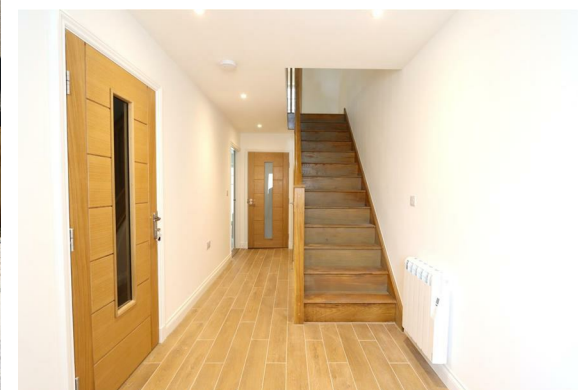
Troys are pleased to present an exquisite development of twelve townhouses priced between £870,000 and £895,000.

These beautiful homes offer a rare opportunity for luxurious urban living. Located within walking distance to the bustling town center, residents will enjoy the convenience of proximity to shops, restaurants, and entertainment options.

Step inside to discover a superior interior finish that sets this home apart, with attention to detail evident in every corner. Boasting three spacious bedrooms, each with there own En-suite bathrooms, this residence offers the ultimate in comfort and privacy for you and your guests.

The first floor features stylish glass partitions, seamlessly connecting the hallway to the open plan primary living space. The kitchen has been equipped with sleek cabinets and counter tops and features a range of high end kitchen appliances. The first and second floor levels provide balcony access from each room, providing ample space for outdoor relaxation and entertaining while offering views of the surrounding neighbourhood. The top floor is configured as one large roof terrace space that benefits from all day sunlight and offers ample entertainment and relaxation space and there is also a small private patio to the rear of the house.

With its contemporary design, prime

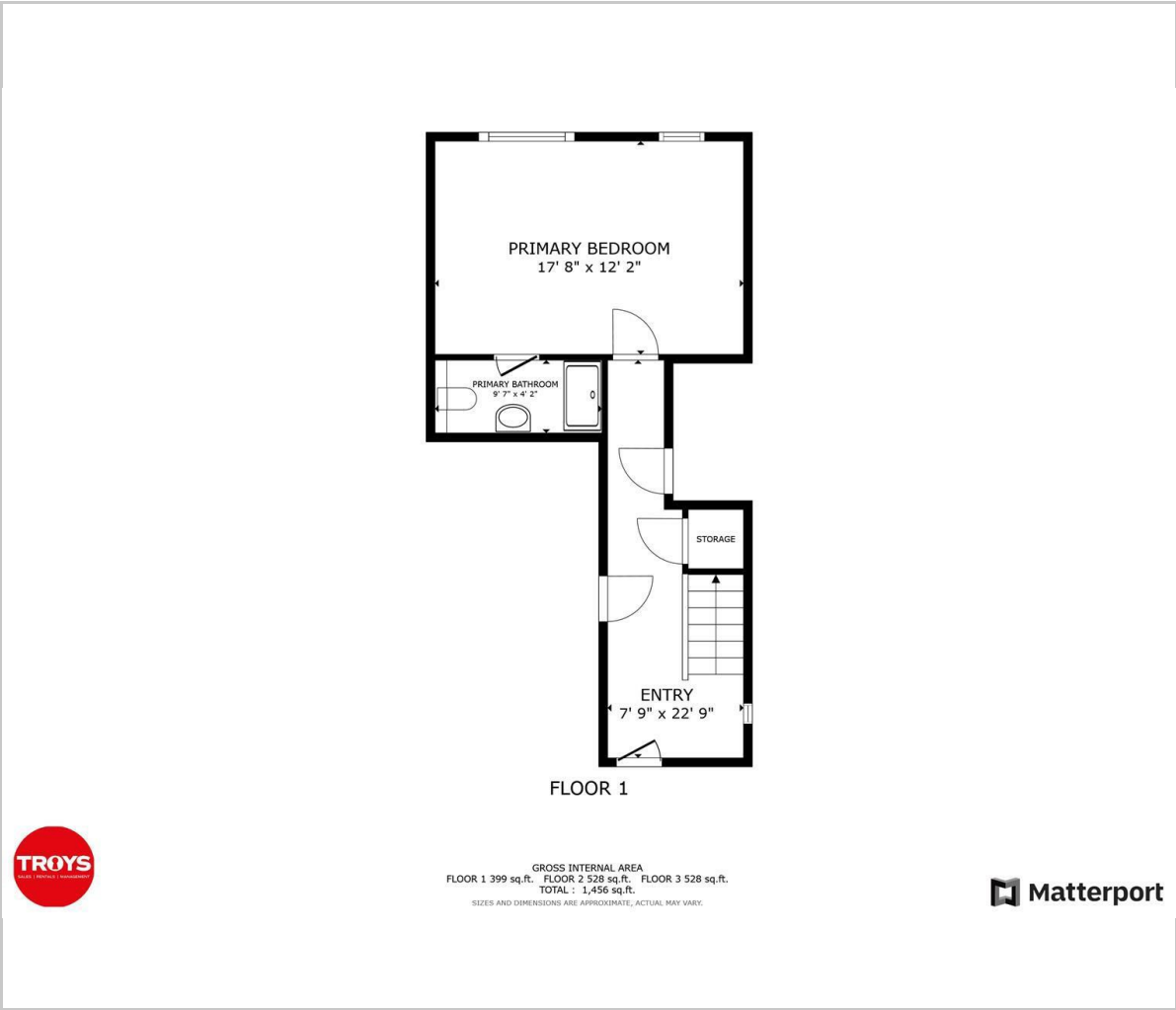






location, and thoughtful amenities, this townhouse offers a lifestyle of luxury and convenience. Don't miss your chance to make one of them your own.

Floor Plan



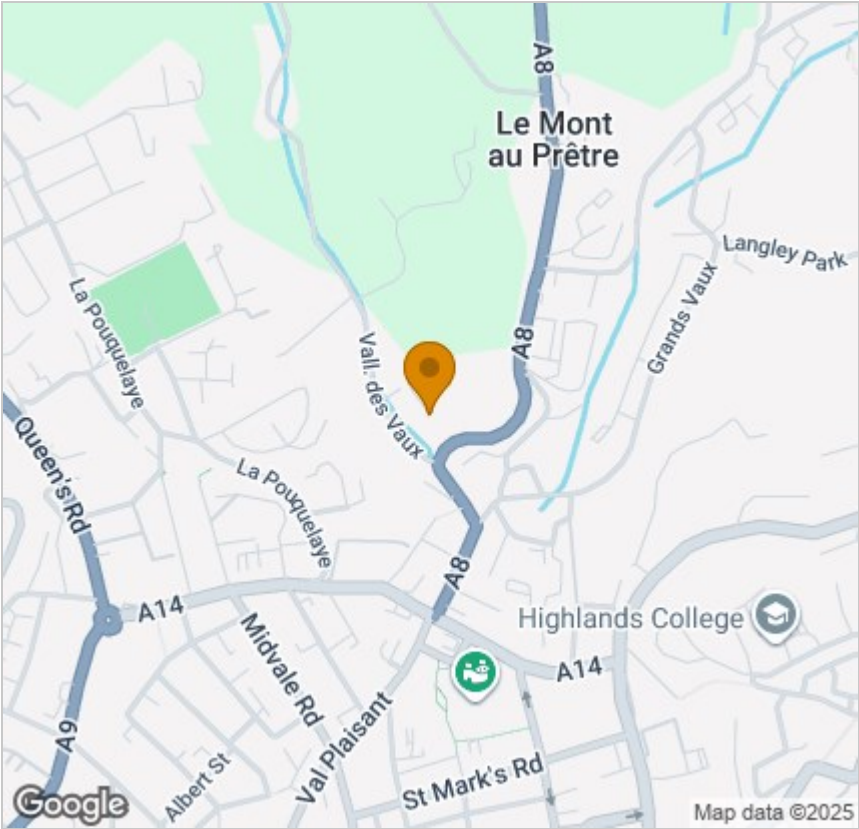
Viewing

Please contact our Troys Estate Agency Ltd Office on 01534 607070 if you wish to arrange a viewing appointment for this property or require further information.

These particulars, whilst believed to be accurate are set out as a general outline only for guidance and do not constitute any part of an offer or contract. Intending purchasers should not rely on them as statements of representation of fact, but must satisfy themselves by inspection or otherwise as to their accuracy. No person in this firms employment has the authority to make or give any representation or warranty in respect of the property.

10 Sand Street, St Helier, Jersey, JE2 3QF  
Tel: 01534 607070 Email: duty@troysjsy.com

Area Map



Energy Efficiency Graph

